

Edukacinės erdvės ir ugdymo metodai jose Tartu gamtinio ugdymo įstaigose

2020-08-17-20



Pažintis su Tartu senamiesčiu ir jo viešųjų erdvių edukaciniais elementais

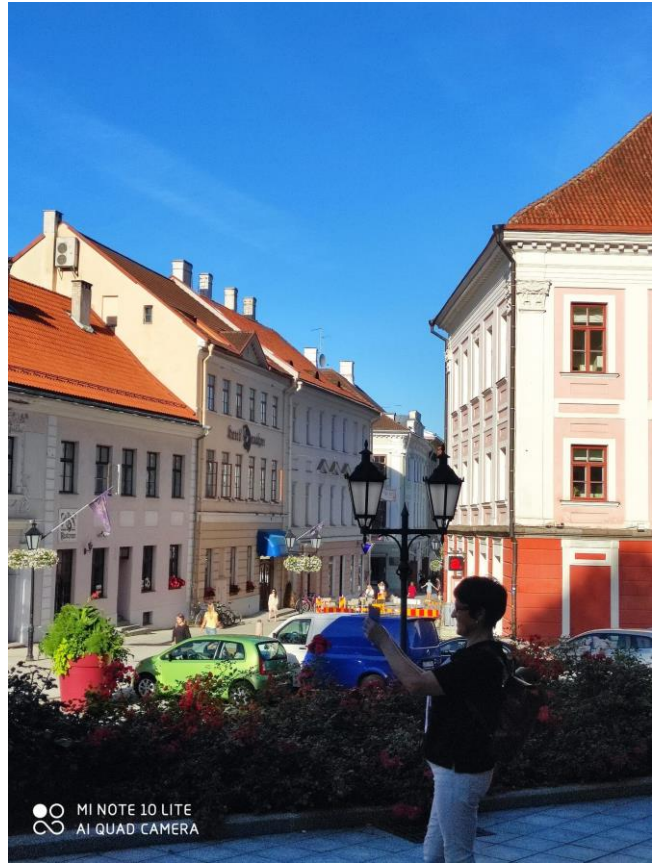




MI NOTE 10 LITE
AI QUAD CAMERA



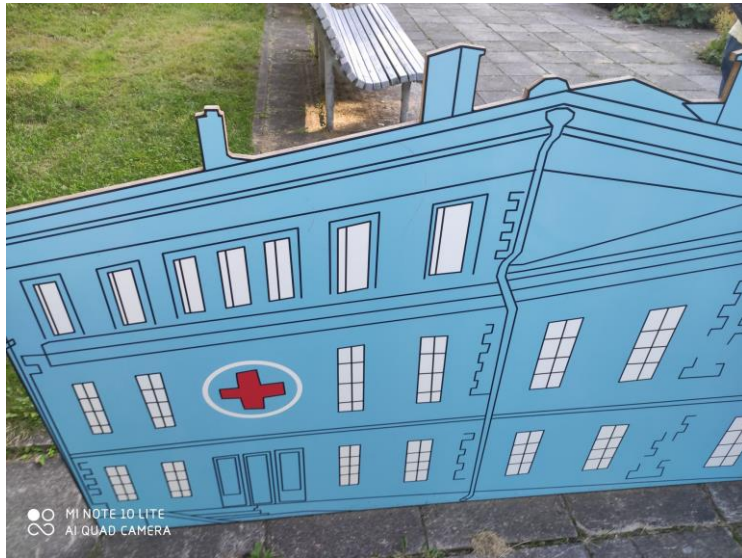
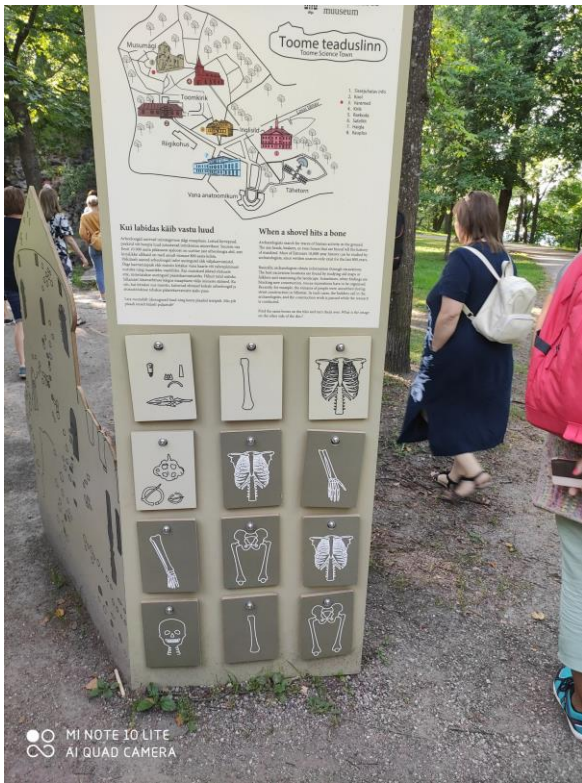
MI NOTE 10 LITE
AI QUAD CAMERA

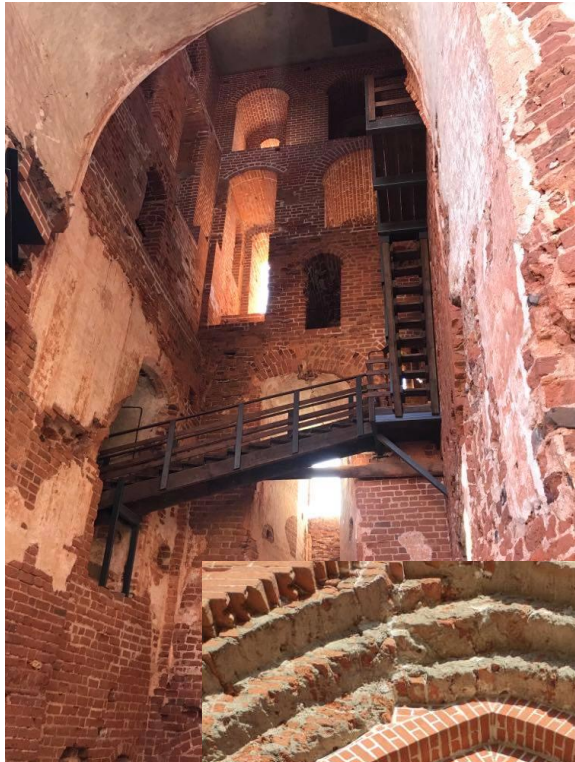


MI NOTE 10 LITE
AI QUAD CAMERA



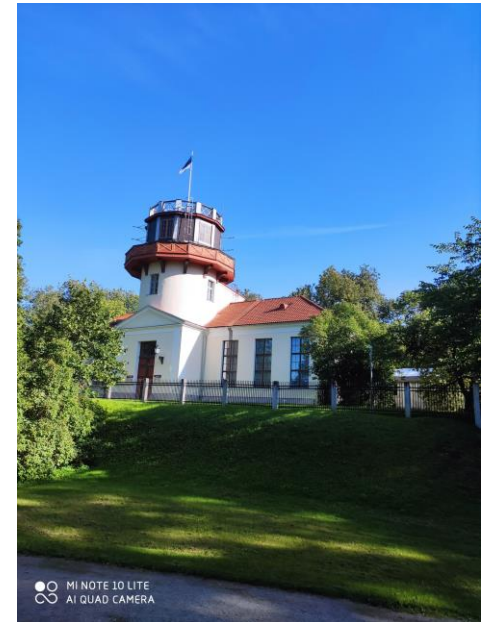






MI NOTE 10 LITE
AI QUAD CAMERA

MI NOTE 10 LITE
AI QUAD CAMERA





Tartu universiteto botanikos sodas

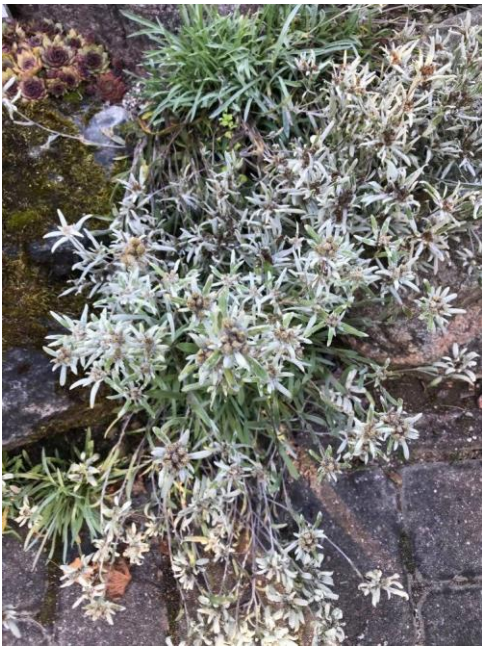








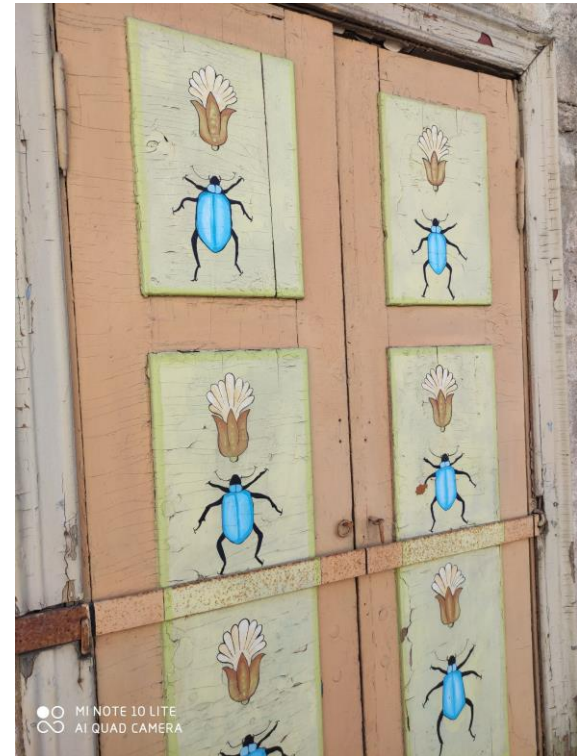




AHHAA mokslo centras



Pažintis su estetiškuoju „Žvėrynu”- Supilinn (Sriubos kvartalas)

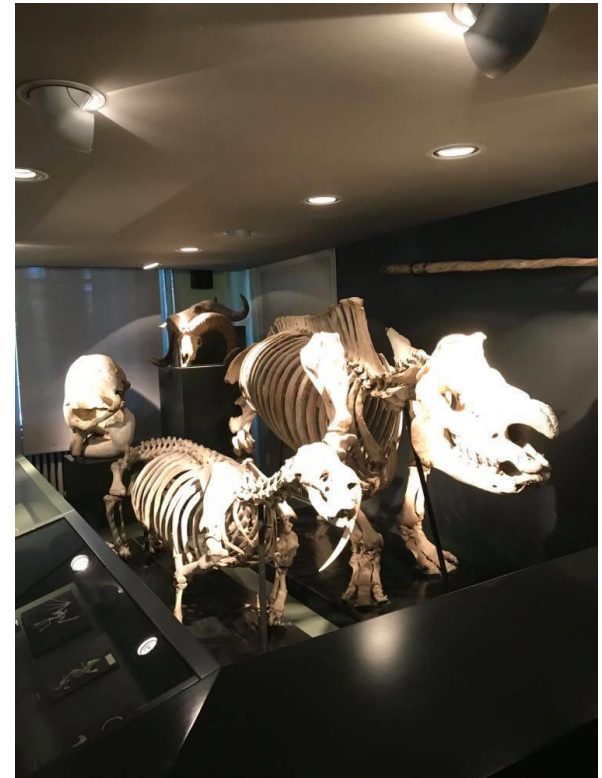


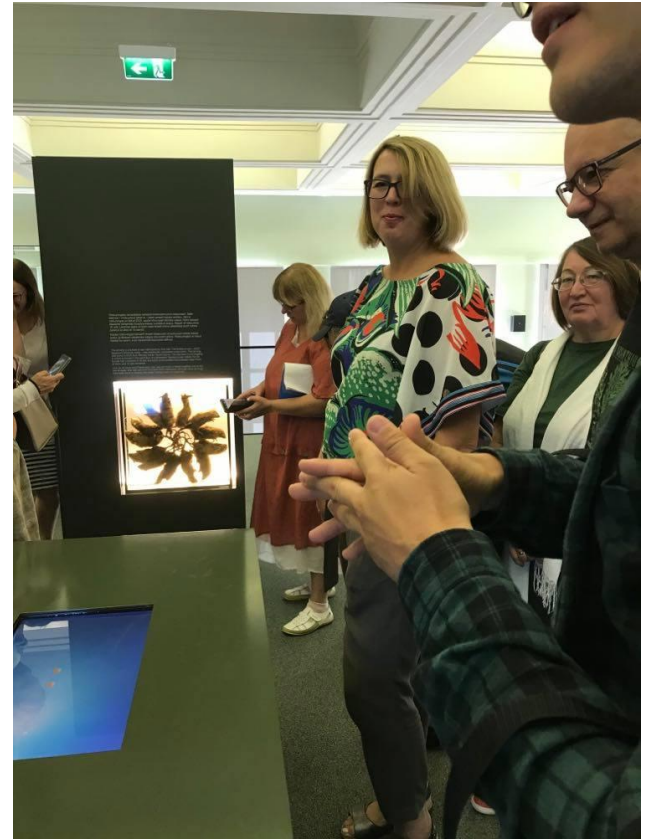
Emajegio upès parko promenada



Tartu universiteto Gamtos istorijos muziejus

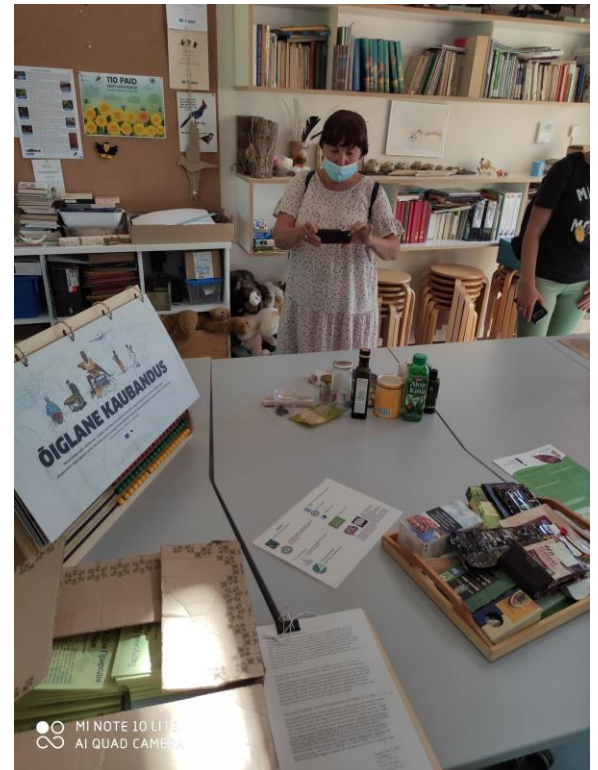


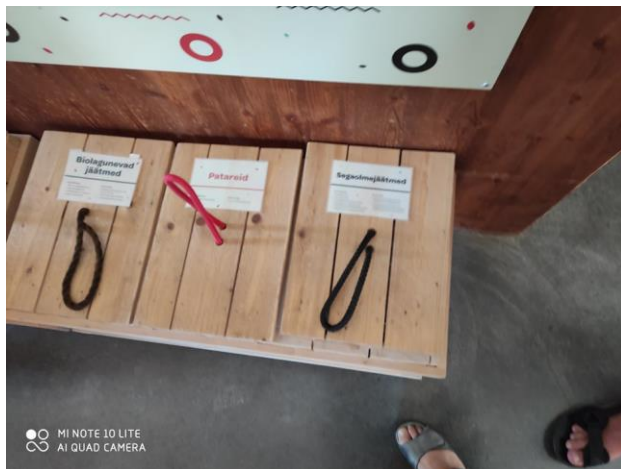
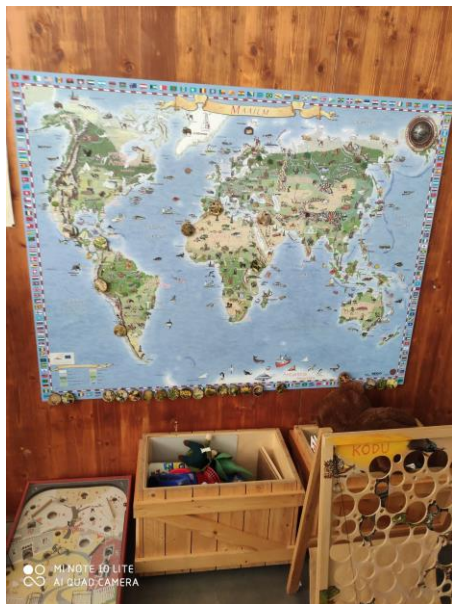


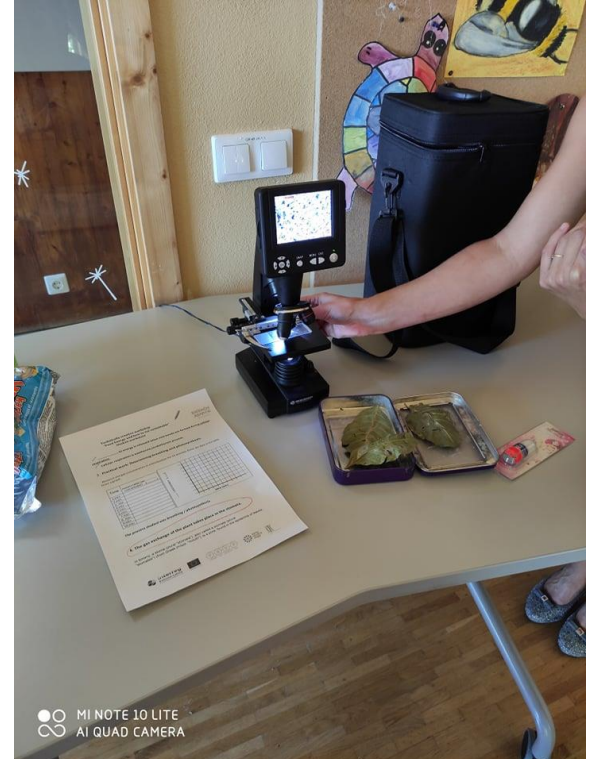


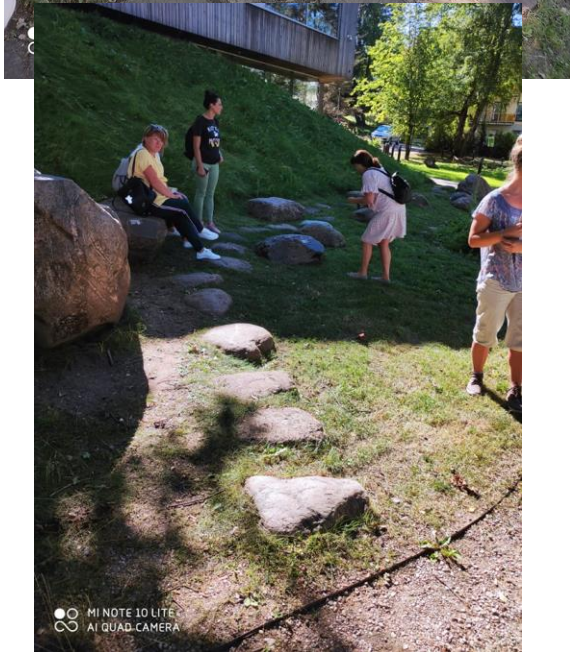
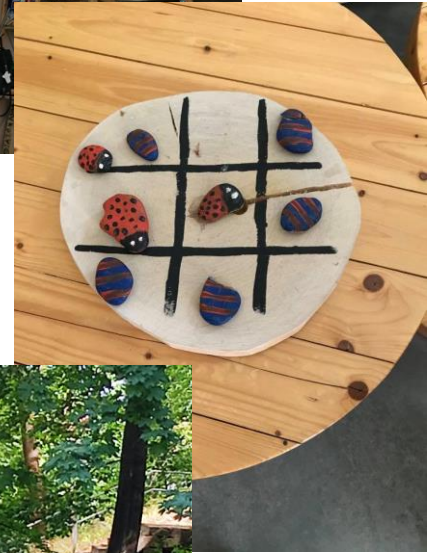
Tartu gamtos namai

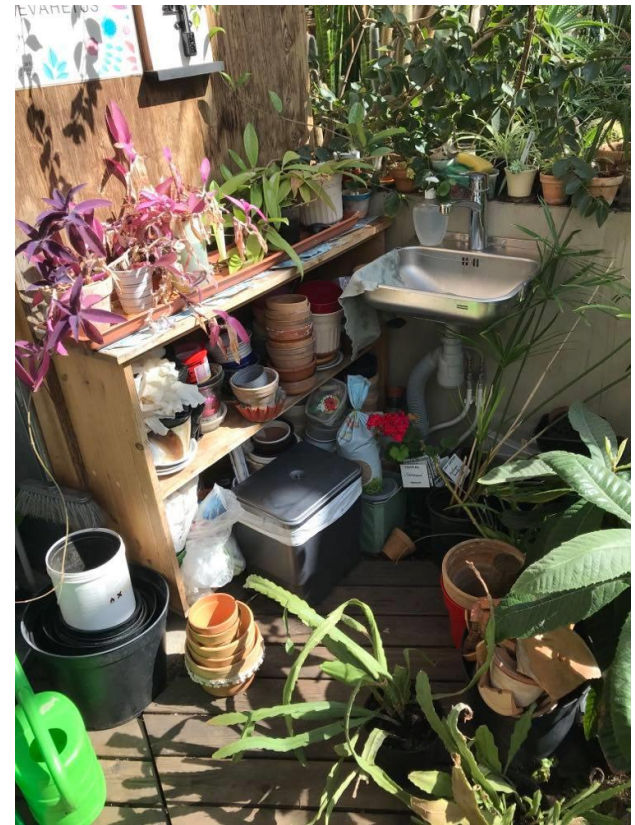






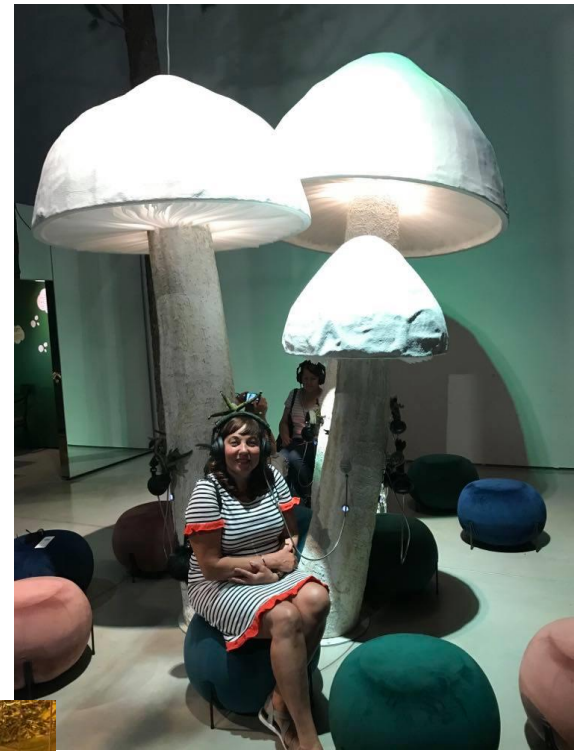






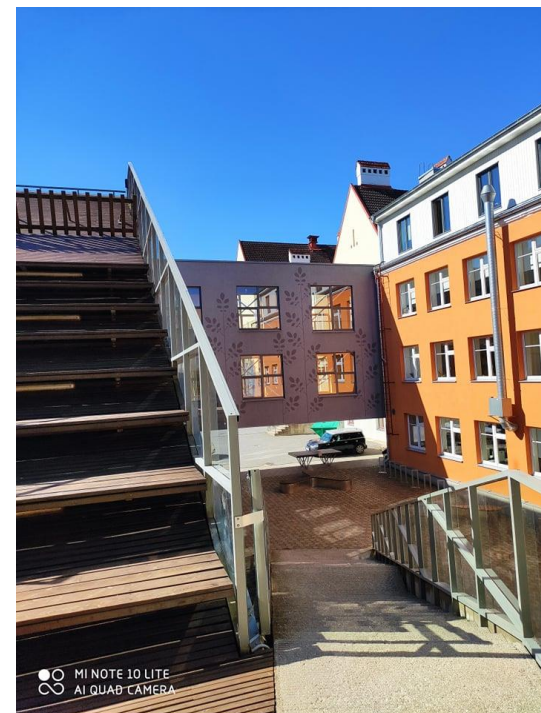
Estijos nacionalinis muziejus

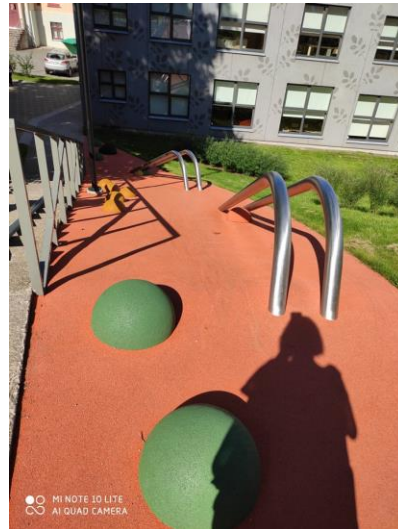
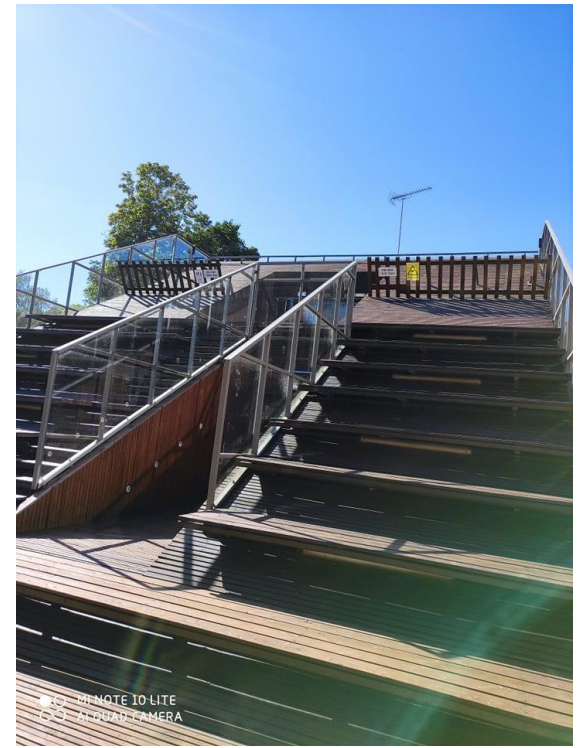


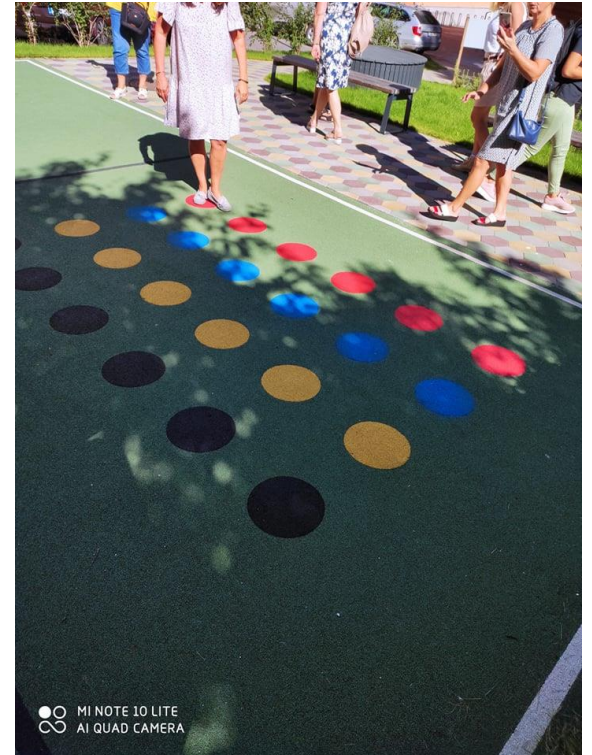




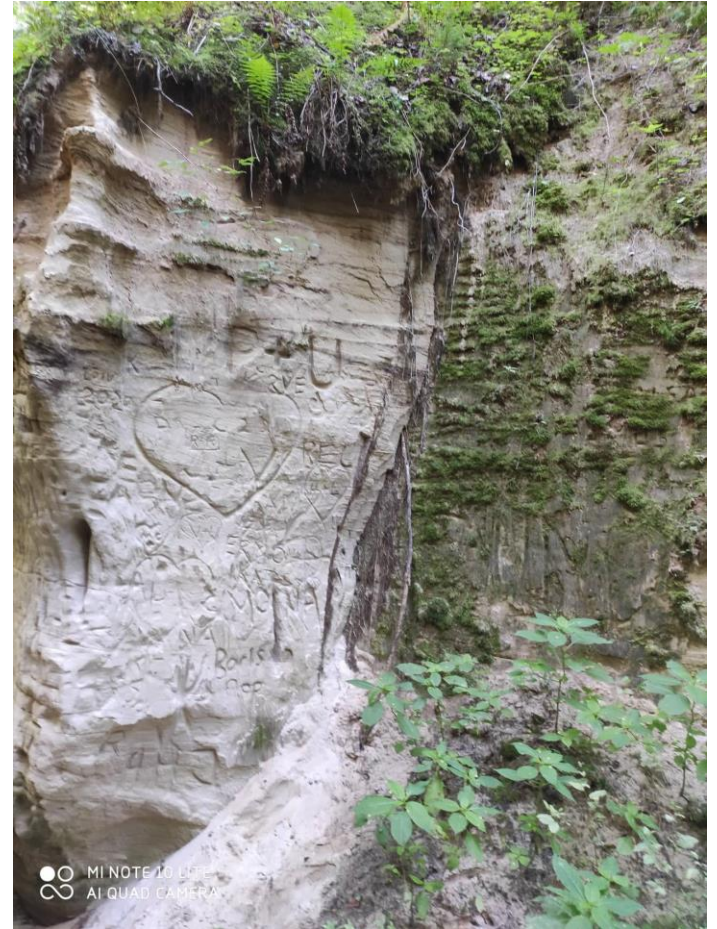
Tartu mokyklos aplinka







Hanijos kanjonas



„Didžiojo kiaušinio kalva”

